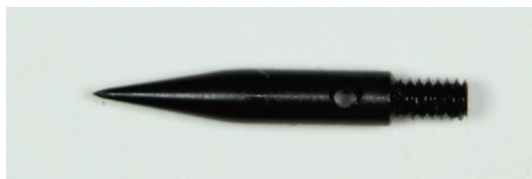


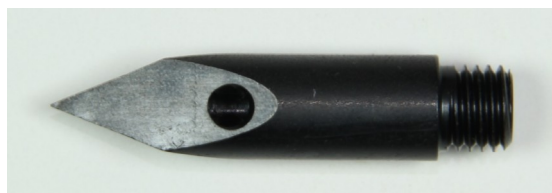
INSTRUMENT DESIGN & MFG. CO.

TROCAR POINTS

Our Trocar Points feature precision machined threads, clean see through slots/holes with no chips, and sharp uniform edges and points.



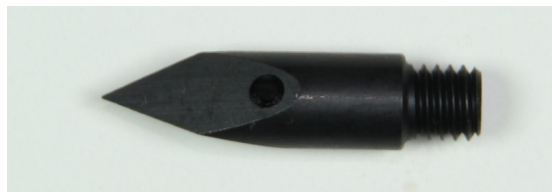
TP6325 1/8" Hypo Trocar Point
Fits TRO6309 Hypo Shaft



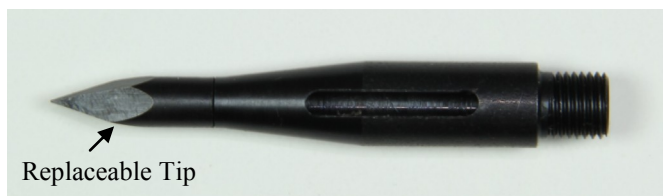
TP6101 3/8" Standard Trocar Point
Fits Slaughter and Dodge "Standard" 3/8" Trocars



TP6333 3/16" Hypo Trocar Point
Fits TRO6317 Hypo Shaft



TP6119 5/16" Standard Trocar Point
Fits Slaughter and Dodge "Standard" 5/16" Trocars



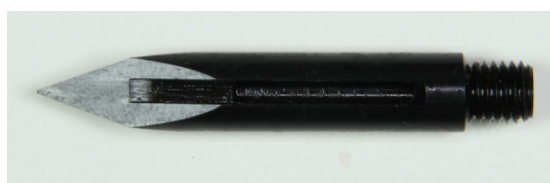
TP6820 5/16" Dynamic Trocar Point
TP6838-6PK Replacement Tips Sold 6 Per Pack
Fits all 5/16" Dynamic Trocars



TP6127 1/4" Standard Trocar Point
Fits Slaughter and Dodge "Standard" 1/4" Trocars



TP6762 3/8" Dynamic Trocar Point
TP6770-6PK Replacement Tips Sold 6 Per Pack
Fits all 3/8" Dynamic Trocars



TP6234 5/16" "Conventional" Trocar Point
Fits Slaughter and Dodge "Conventional" and Visible Flow 5/16" Trocars

INSTRUMENT DESIGN & MFG. CO.

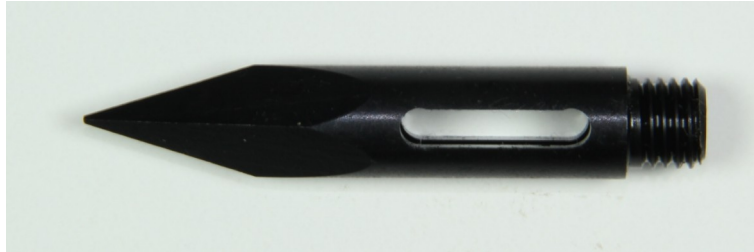
25 Harvey Road
Unit 6
Bedford, NH 03110

Phone: 603-606-5412
Fax: 603-606-5101
E-mail: sales@embalminginstrument.com
Web Site: www.embalminginstrument.com

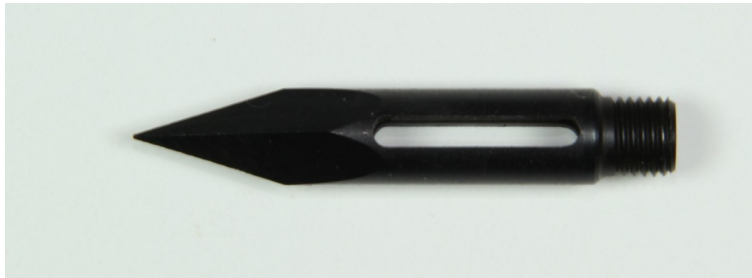
INSTRUMENT DESIGN & MFG. CO.

TROCAR POINTS (CONT.)

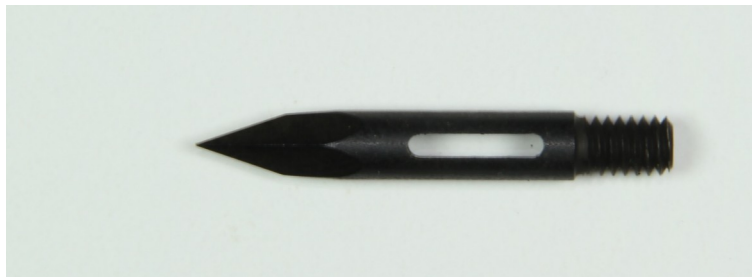
Our Trocar Points feature precision machined threads, clean see through slots with no chips, and sharp uniform edges and points.



TP6408 3/8" Trocar Point
Fits IDMC TRO375-XX-BP , Dodge TRO-DG375-XX-BP, and
Slaughter 816 Series Trocars



TP6416 5/16" Trocar Point
Fits IDMC TRO312-XX-BP , Dodge TRO-DG312-XX-BP, and
Slaughter 817 Series Trocars



TP6432 3/16" Trocar Point
Fits IDMC TRO187-XX-BP , Dodge TRO-DG187-XX-BP, and
Slaughter 819 Series Trocars

INSTRUMENT DESIGN & MFG. CO.

25 Harvey Road
Unit 6
Bedford, NH 03110

Phone: 603-606-5412
Fax: 603-606-5101
E-mail: sales@embalminginstrument.com
Web Site: www.embalminginstrument.com

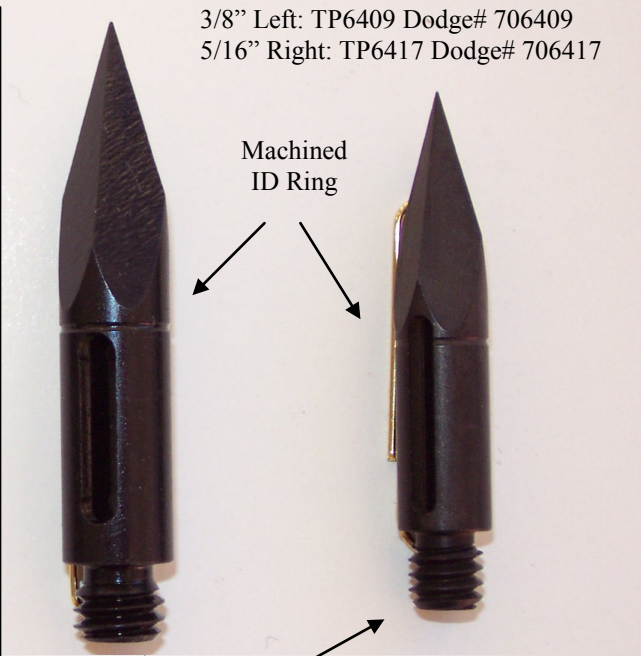
INSTRUMENT DESIGN & MFG. CO.

DODGE TROCAR POINTS

5/16" Left: TP6416 Dodge# 706416
3/8" Right: TP6408 Dodge# 706408



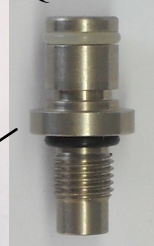
3/8" Left: TP6409 Dodge# 706409
5/16" Right: TP6417 Dodge# 706417



This Trocar also has the name
"The Dodge Company"
imprinted on the Stainless shaft.



QCM-DGTROTHD



Use this male quick
connect for this style
slip hub



How To Identify Correct Trocar Point

Earlier Dodge Trocars have a different Trocar point thread than the current Trocars. The pictures above show how to identify which Trocar you have and the part numbers for each Trocar Point.

INSTRUMENT DESIGN & MFG. CO.

25 Harvey Road
Unit 6
Bedford, NH 03110

Phone: 603-606-5412
Fax: 603-606-5101
E-mail: sales@embalminginstrument.com
Web Site: www.embalminginstrument.com